



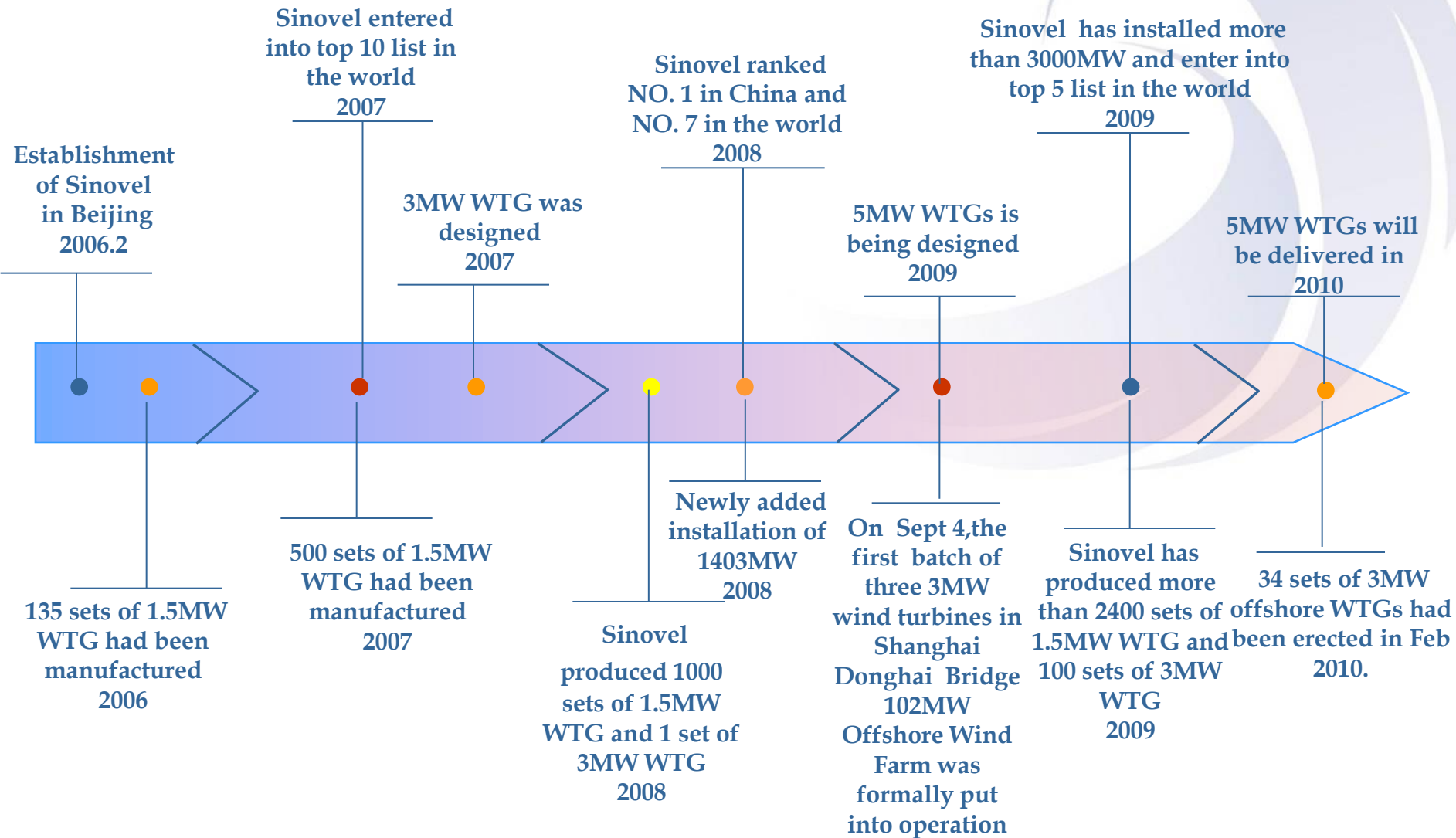
SINOVEL'S STRATEGIES FOR OFFSHORE WIND:
PROJECT DEVELOPMENT AND
TECHNOLOGICAL COLLABORATION

Mar 2010

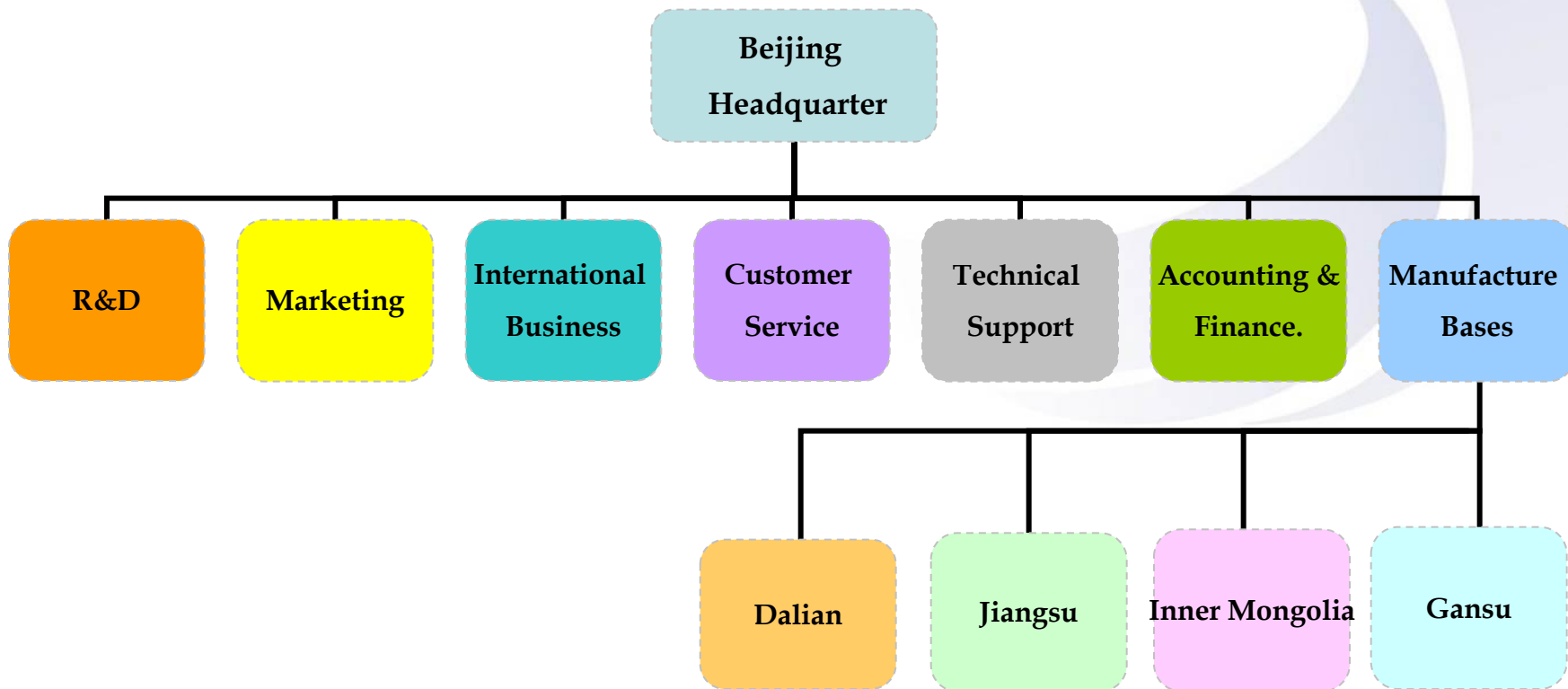
THE COMPANY BRIEF

- A wind turbine manufacturer, headquartered in Beijing, is engaged in designing, manufacturing and marketing of the large-scale onshore and offshore wind turbine generator system.
- Sinovel manufactured and erected 1400MW in 2008, produced more than 2400 units of its 1.5 MW series and 100 units of its 3 MW series in 2009, which made it rank No.1 in China and Top 5 in the world.
- 34 units of 3MW offshore wind turbines have been installed in the first offshore wind farm of China (102MW Shanghai Donghai Bridge project) on Feb 27, 2010.
- Sinovel is designing 5MW offshore turbine, the first prototype will be delivered in 2010.

MILESTONES



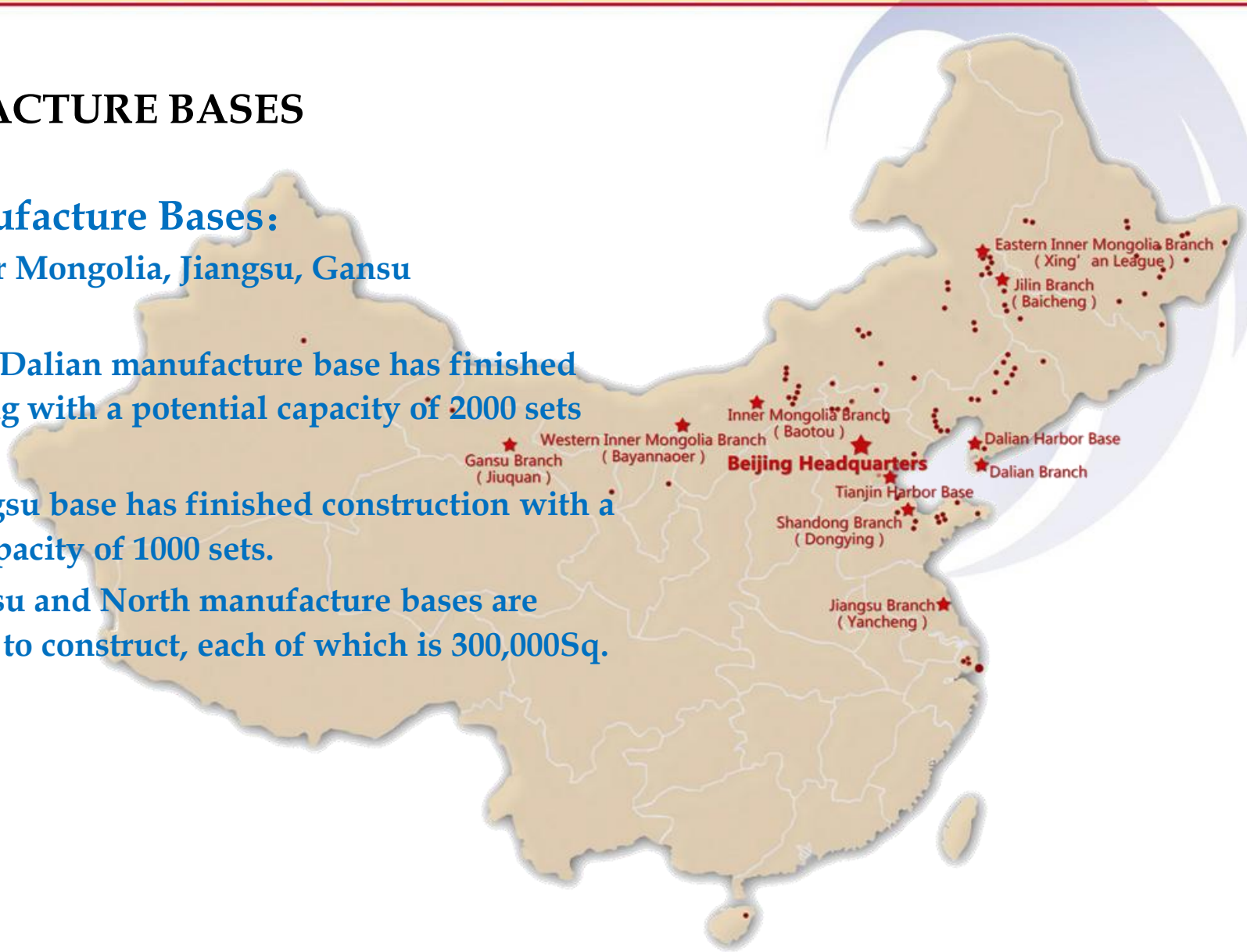
SINOVEL ORGANIZATION STRUCTURE



MANUFACTURE BASES

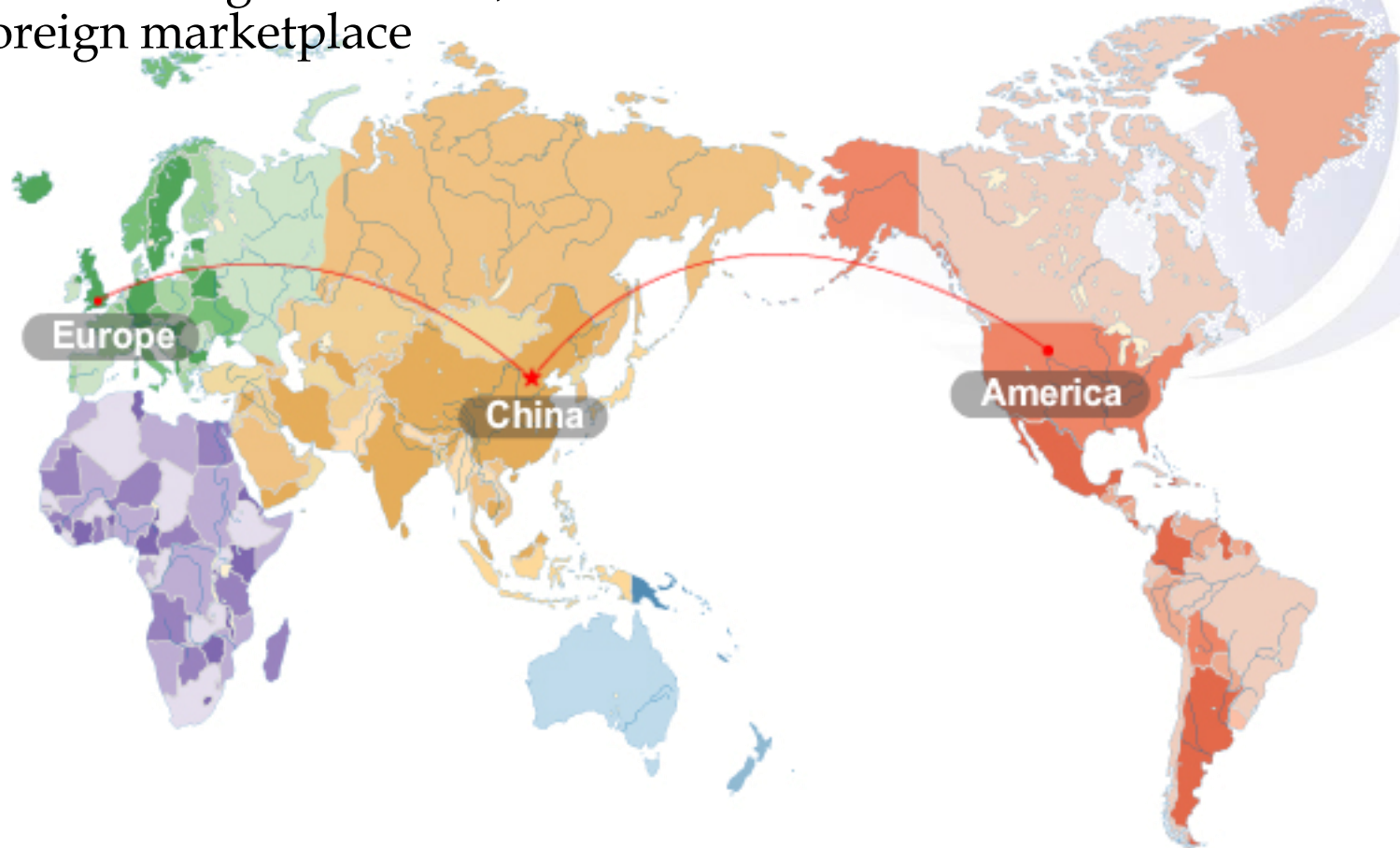
Four Manufacture Bases: Dalian, Inner Mongolia, Jiangsu, Gansu

- The new Dalian manufacture base has finished expanding with a potential capacity of 2000 sets per year.
- The Jiangsu base has finished construction with a yearly capacity of 1000 sets.
- The Gansu and North manufacture bases are prepared to construct, each of which is 300,000Sq.



OUR STRATEGIES (1)

- Enlarge our local market & explore international business development opportunity
- Establish regional office, manufacture branch and service center in target foreign marketplace



OUR STRATEGIES (2)

- Focus on technical innovation, market 3MW onshore and offshore turbine;
- Design and make 5MW+ onshore and offshore prototype with independent intellectual properties

SHANGHAI DONGHAI BRIDGE OFFSHORE PROJECT

- The first offshore wind project in China, with 34 unit of Sinovel SL3000 of total 102MW.
- The wind farm is near the coast Shanghai, the water depth is 10 m in average, and turbines lay out 8km to 13 km far from shore.



SHANGHAI DONGHAI BRIDGE OFFSHORE PROJECT

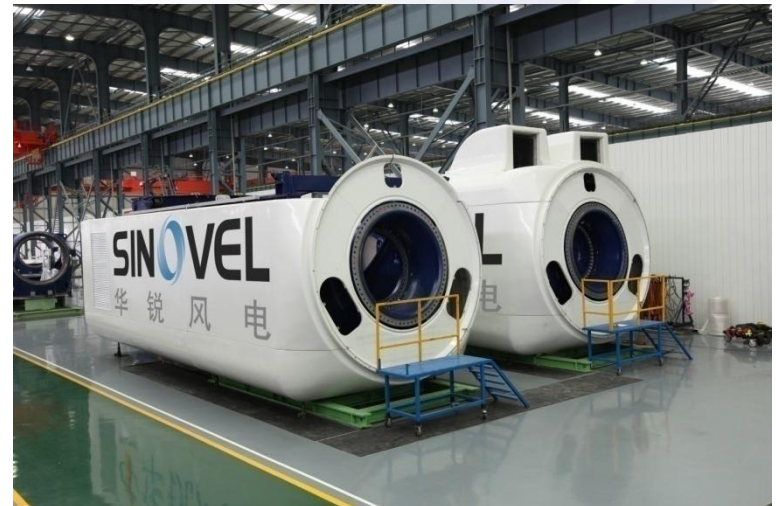
- At 3:28 pm February 27 upon connection of the 34th wind turbine to the offshore pile cap, all the turbines were successfully installed.
- At present, the first turbines have been put into operation, passed the 240-hour test, and all together generated 7.35 million kWh of electricity.
- The wind farm will put all its wind turbines into operation before the opening of Expo 2010 Shanghai in May to supply clean energy for this event.



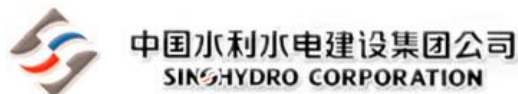
SL3000 SERIES-OFFSHORE & ONSHORE

SL3000 series wind turbine integrates advanced power generating technologies such as variable speed control, pitch regulated system and double-fed inductive generator . SL3000 series wind power has both normal climate and cold climate version and it is suitable for onshore , offshore, and intertidal installation to satisfy various wind energy resource conditions .

- Compact drive train
- Highly performance of power generating
- Individually controlled pitch system
- Optimized gearbox concept
- Low voltage ride through capability
- On-line condition monitoring system
- Special corrosion protection measure
- Self-maintenance crane for offshore and intertidal wind turbine
- Redundant strategy for offshore and intertidal wind turbine for higher operation reliability



STRATEGIC PARTNERS





THANK YOU